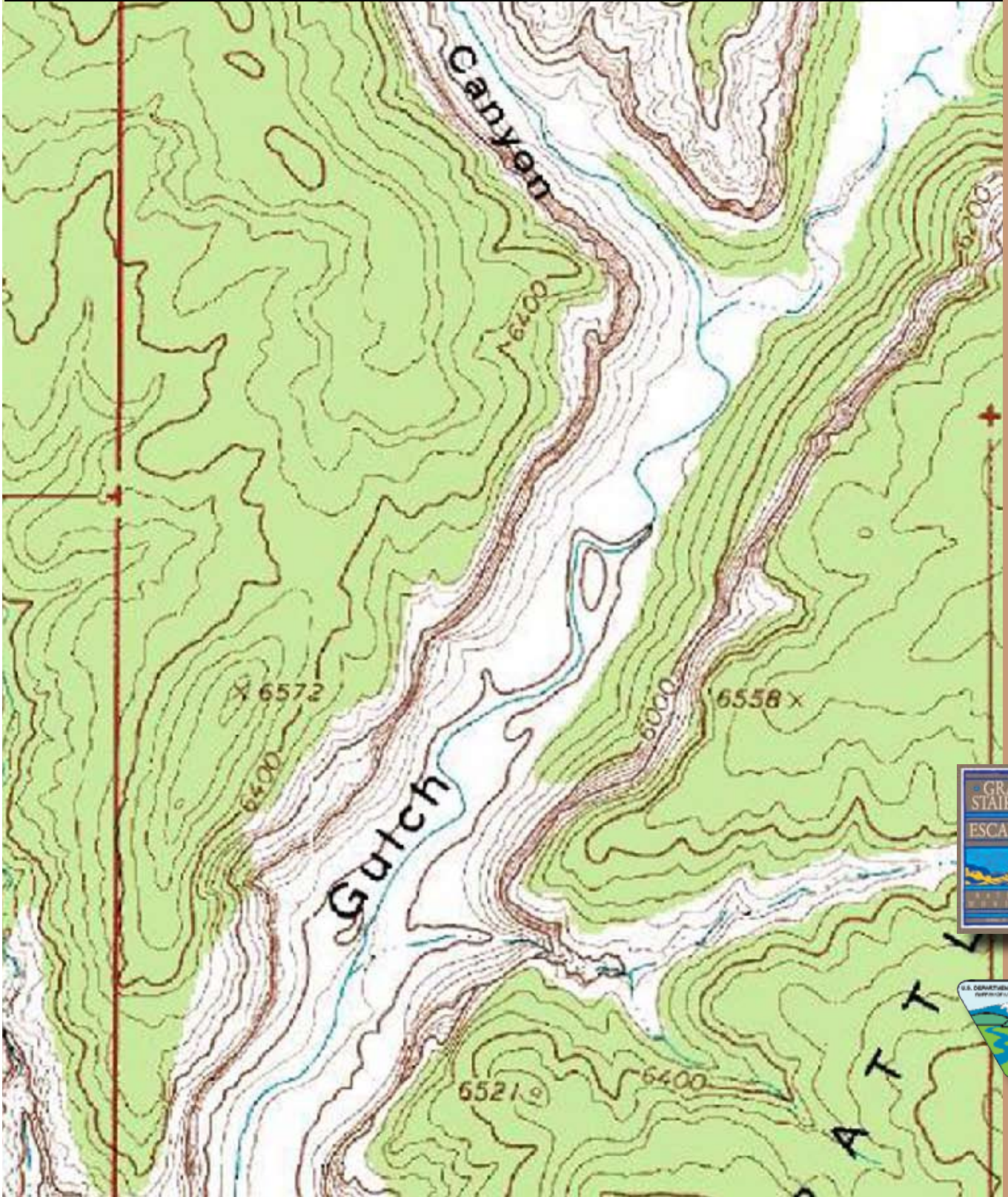
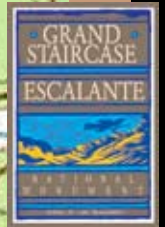


Reading a Topographic Map

Student Questions



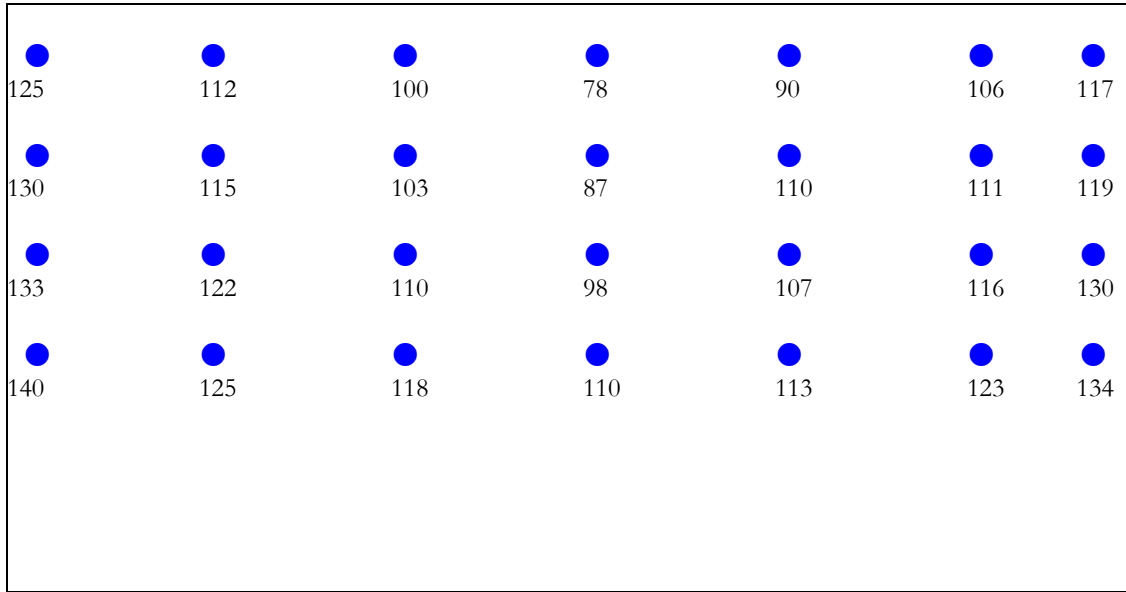
Grand Staircase-Escalante National Monument



Reading a Topographic Map

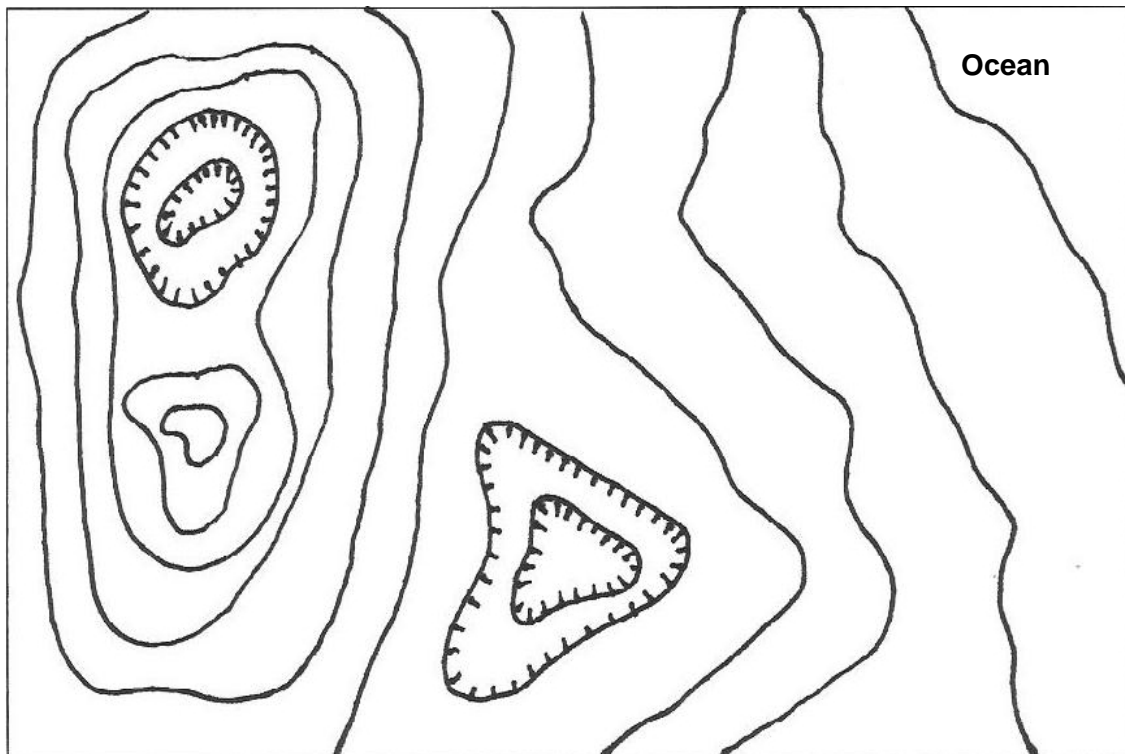
Question 1

The dots below are measured elevations in feet. Draw contour lines on the map using a contour interval of 10 feet. You'll need to estimate elevations between some of the dots.



Question 2

On the map below mark each contour line with its proper elevation, using contour intervals of 40 feet. Label features you can describe.



Question 3. King Bench Spring #1

Start: You and three friends are driving down the Burr Trail and you decide to park where the road meets Deer Creek in Section 16, Township 34 South, Range 5 East, and go for a little hike.

Find: You are looking for the most direct route to the spring in Section 2, T35S, R5E.

Figure: If you're traveling light and making about three miles an hour, how long will it take you to get to the spring?

Question 4. King Bench Spring #2

Start: You are at the spring in S2, T35S, R5E, and two of your friends decide to return to the car by retracing their path. You and your other friend decide to take a different route to the road where you can be picked up.

Find: Find the most direct route from the spring to the corral in S13, T34S, R5E.

Figure: Approximately how long will it take you to reach to corral if you are traveling four miles an hour?

Question 5

You know how long it will take your friends to get back to the car (see previous problem), who will reach the road first?
